

## THE J-HARVEST RACK™

### • ASSEMBLY INSTRUCTIONS •

#### PARTS INCLUDED

#### The J-Harvest Rack pieces :

##### METAL BARS

- 4 - 48" Leg-Bar (1.5"x .75") ..... ( A )
- 1 - 48" Hanger-Bar (1.5"x .75")..... ( B )

##### BRACKETS

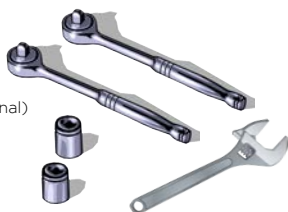
- 2 - J-Harvest Outer Bracket ..... ( J )
- 2 - J-Harvest Inner Bracket ..... ( L )

##### SCREWS & NUTS

- 12 - 2 1/4" 10-24 Pan-Head Bolt ..... ( i )
- 12 - #10-24 Hex Nut ..... ( ø )

#### RECOMMENDED TOOLS (NOT INCLUDED)

Ratchet Wrenches  
Sockets 5/16, 3/8  
Pliers / Wrench (optional)



## PREPARE TO BUILD YOUR J-HARVEST RACK

Congratulations!

The DriFlower J-Harvest Rack is a fixed rack designed to work with you at the location of harvest.

#### MAKE SURE TO READ ALL OF THESE INSTRUCTIONS

After reading the instructions, make sure you have the correct pieces and screws for each assembly (listed on the front page of these instructions).

You will start by putting together the leg assemblies. Then attach the Hanger-Bar (stick) to the leg assemblies.

#### KEEP IT EASY - ALLOW FOR WIGGLE ROOM

When connecting the legs with the J-Harvest Brackets, we recommend using two ratchet wrenches, but leave a little wiggle room. All pieces come with pre-drilled holes for convenient assembly.

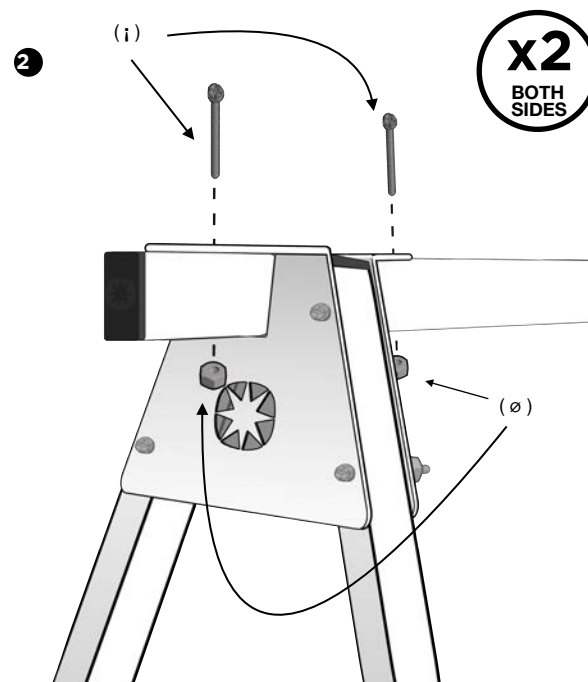
Once the leg assemblies and Hanger-Bar are all connected, check your connections and securely tighten with wrenches for a tight fit.

#### MIND THE DRILL HOLES

Keeping a visual check on your pieces. The legs and the Hanger-Bar are very similar, but do have different pre-drilled holes.

Take your time. This J-Harvest Rack is about to transform the way you harvest your flower!

## ATTACH HANGER-BAR (STICK)



Slide the Hanger-Bar (B) through the openings on both leg assemblies. Line up the pre-drilled holes of the Hanger-Bar with the corresponding holes in the J-Harvest Brackets. Partially tighten.

#### ONCE EVERYTHING IS CONNECTED - TIGHTEN IT UP!

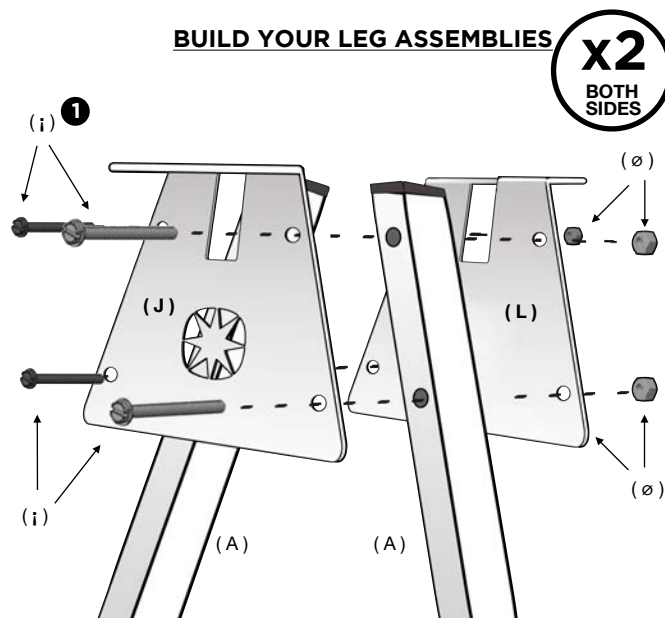
Once all connections have been tightened, you're ready to start harvesting! Carry the J-Harvest Rack to where you're knocking down, get your J-Hangers on the hanger-bar and you're all set!

For a video of this assembly and to view other videos and instructions, please visit us online at:

<https://driflower.com/support/brochures-and-manuals/>



## BUILD YOUR LEG ASSEMBLIES



Attach J-Brackets to each vertical leg with screws and nuts.